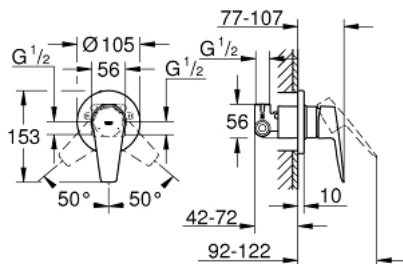


29 040 001 **BAUEDGE SINGLE-LEVER SHOWER MIXER 1/2"**

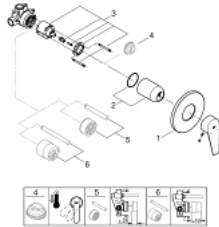


**PRODUCT DESCRIPTION**

- concealed installation
- set for final installation
- concealed body
  
- **GROHE Longlife** 46 mm ceramic cartridge
  
- **GROHE StarLight** chrome finish
- adjustable flow rate limiter
- escutcheon- and shaft-sealing



29 040 001 **BAUEDGE SINGLE-LEVER SHOWER MIXER 1/2"**



**SPARE PARTS**

- 1: Escutcheon (Order-nr. 46773000)
  - 2: Cap (Order-nr. 09038000)
  - 3: Cartridge (Order-nr. 46048000)
  - 4: Temperature limiter (Order-nr. 46308000)\*
  - 5: Extension set (Order-nr. 46191000)\*
  - 6: Extension set (Order-nr. 46343000)\*
- \* Optional accessories